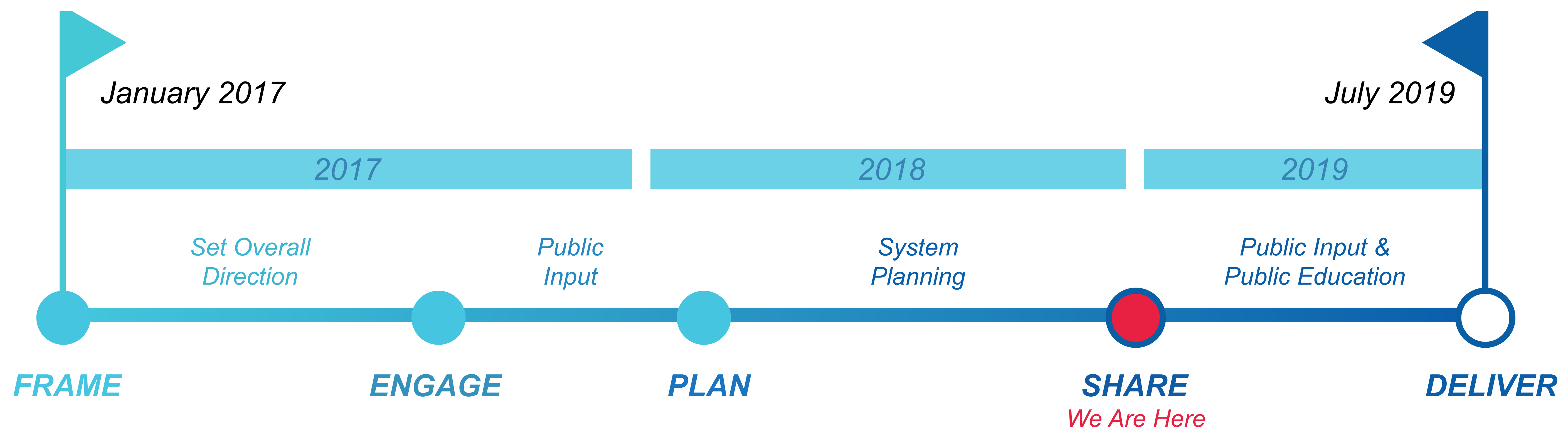


# WELCOME

---



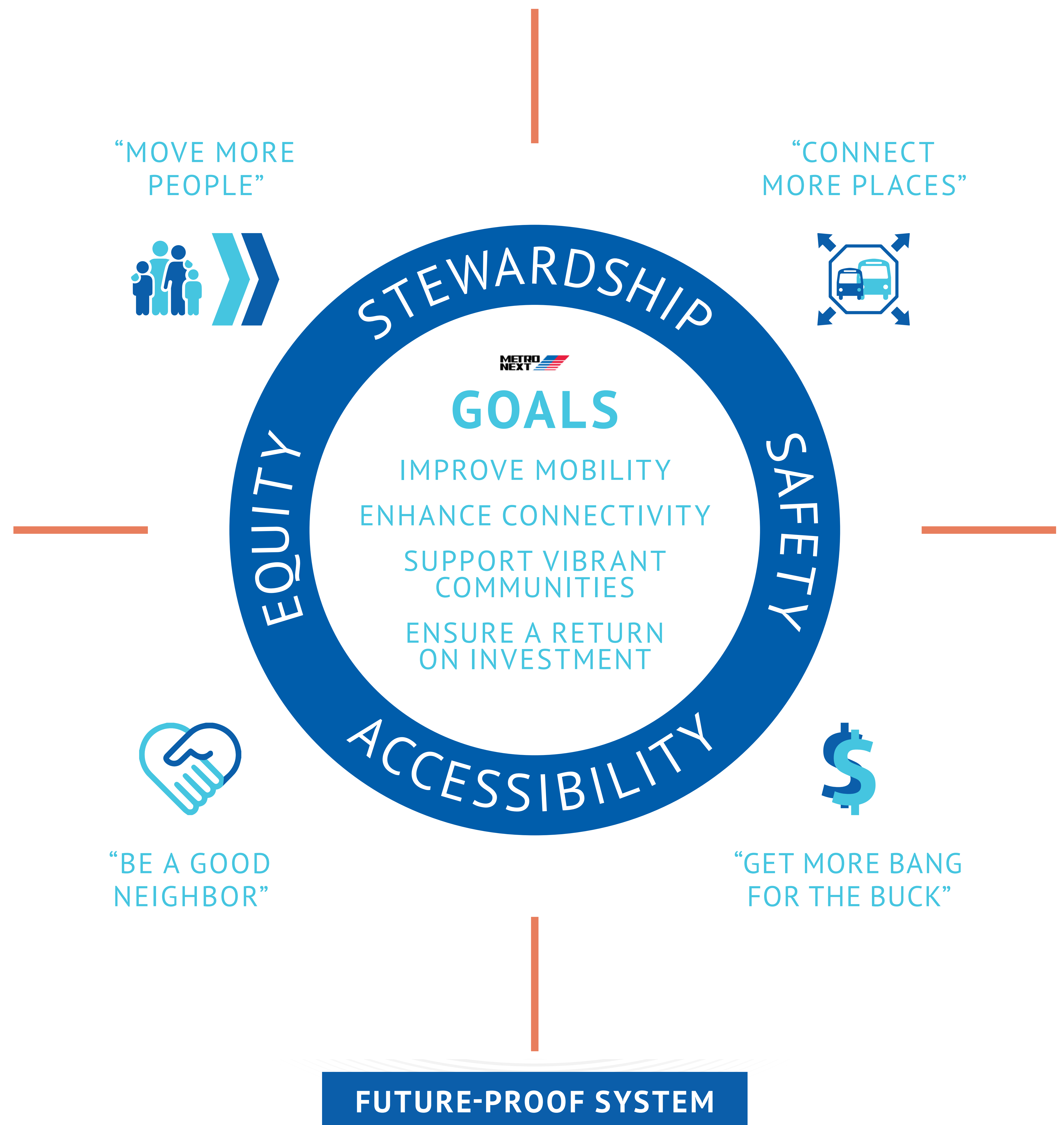
[www.METRONext.org](http://www.METRONext.org)



# What Is METRONext

METRONext is the development of a regional transportation plan designed to keep our **region and communities thriving**.

It takes a forward-thinking approach to move more people as the Houston region grows over **the next 20 years and beyond**.



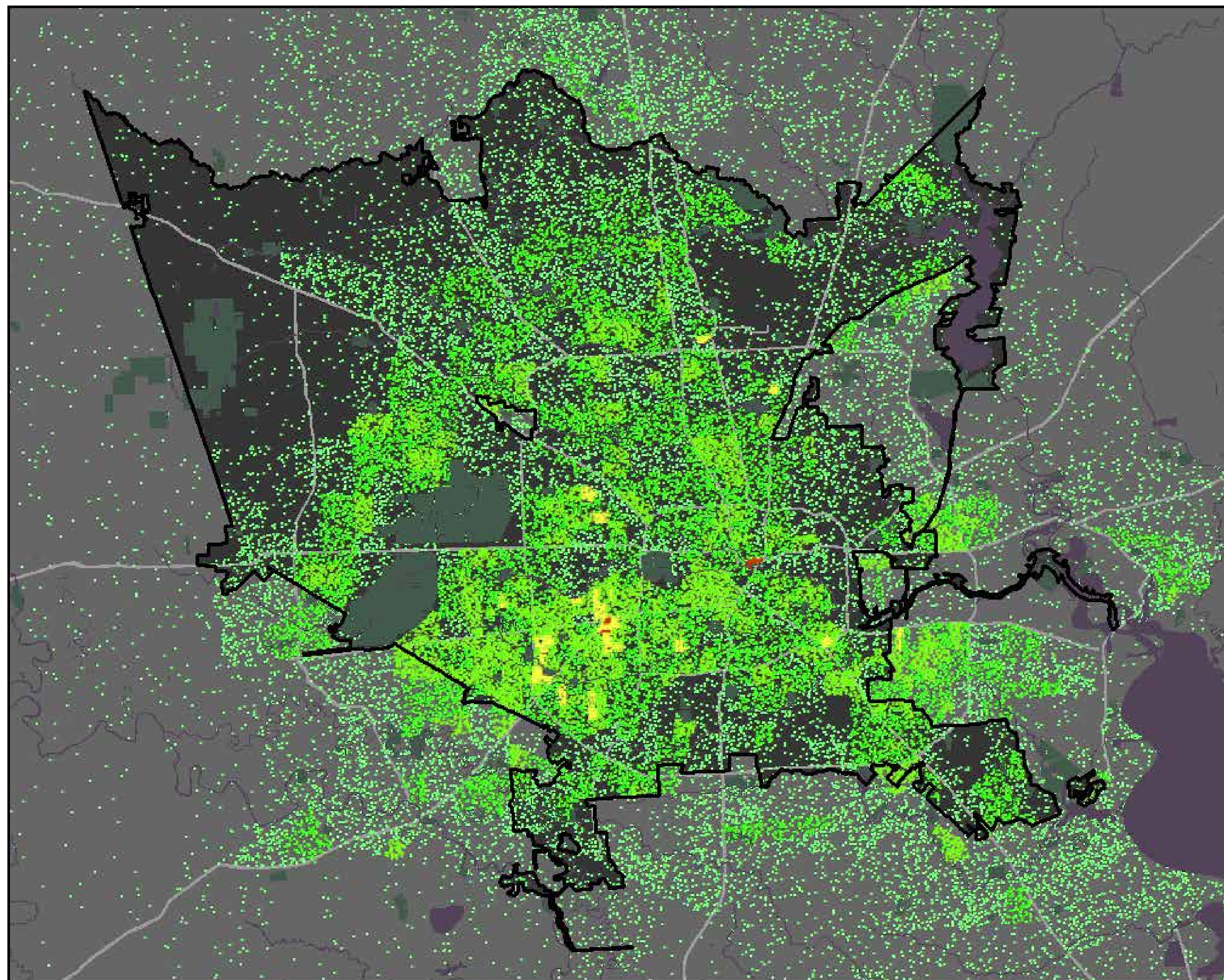




# Why METRONext

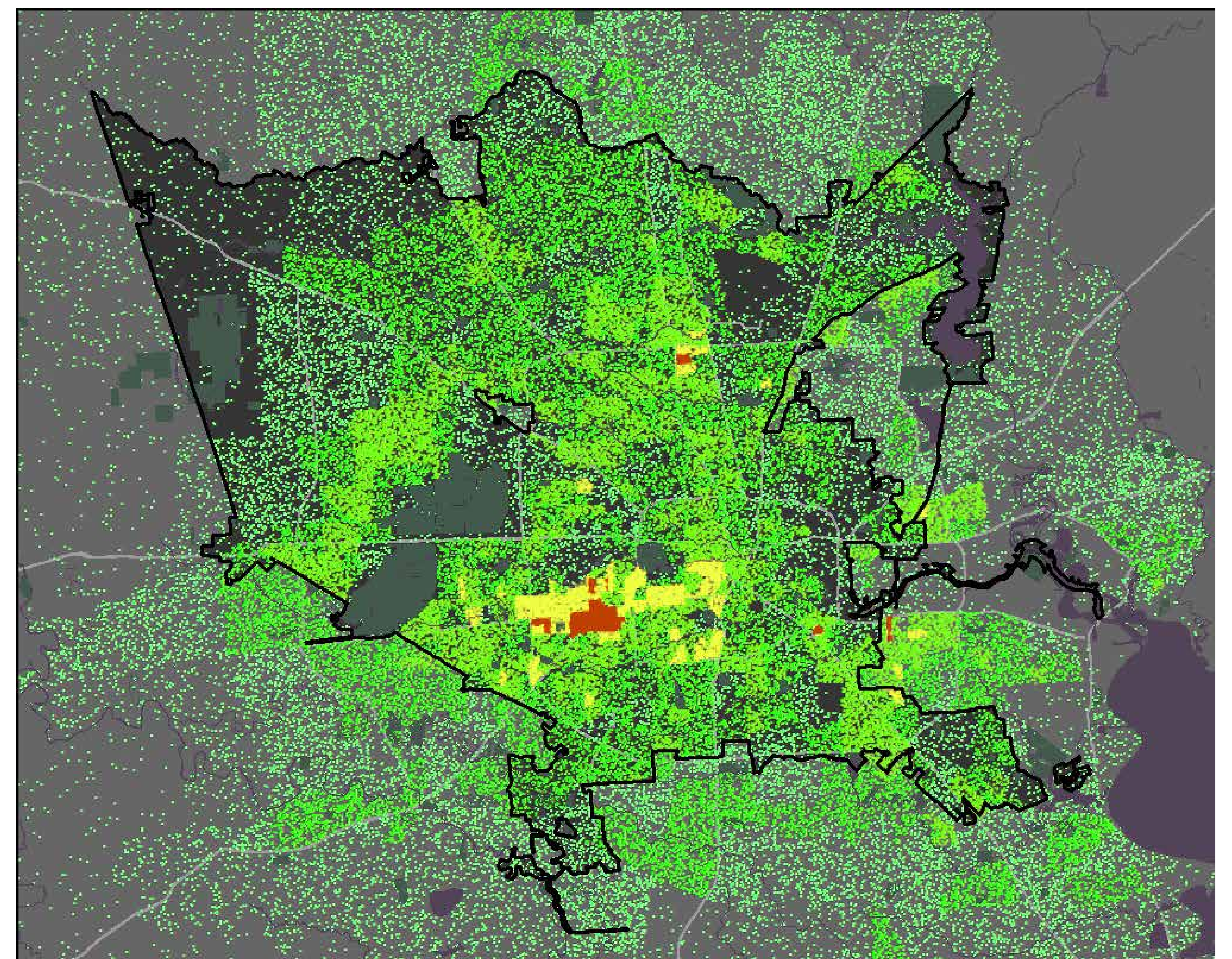
Our region will grow by **FOUR MILLION** people by 2040

HOUSTON  
2010



REGIONAL POPULATION  
6 MILLION

HOUSTON  
2040



REGIONAL POPULATION  
10 MILLION

**LEGEND**

1 DOT = 100 PEOPLE

Intense growth area

Source: Houston-Galveston Area Council

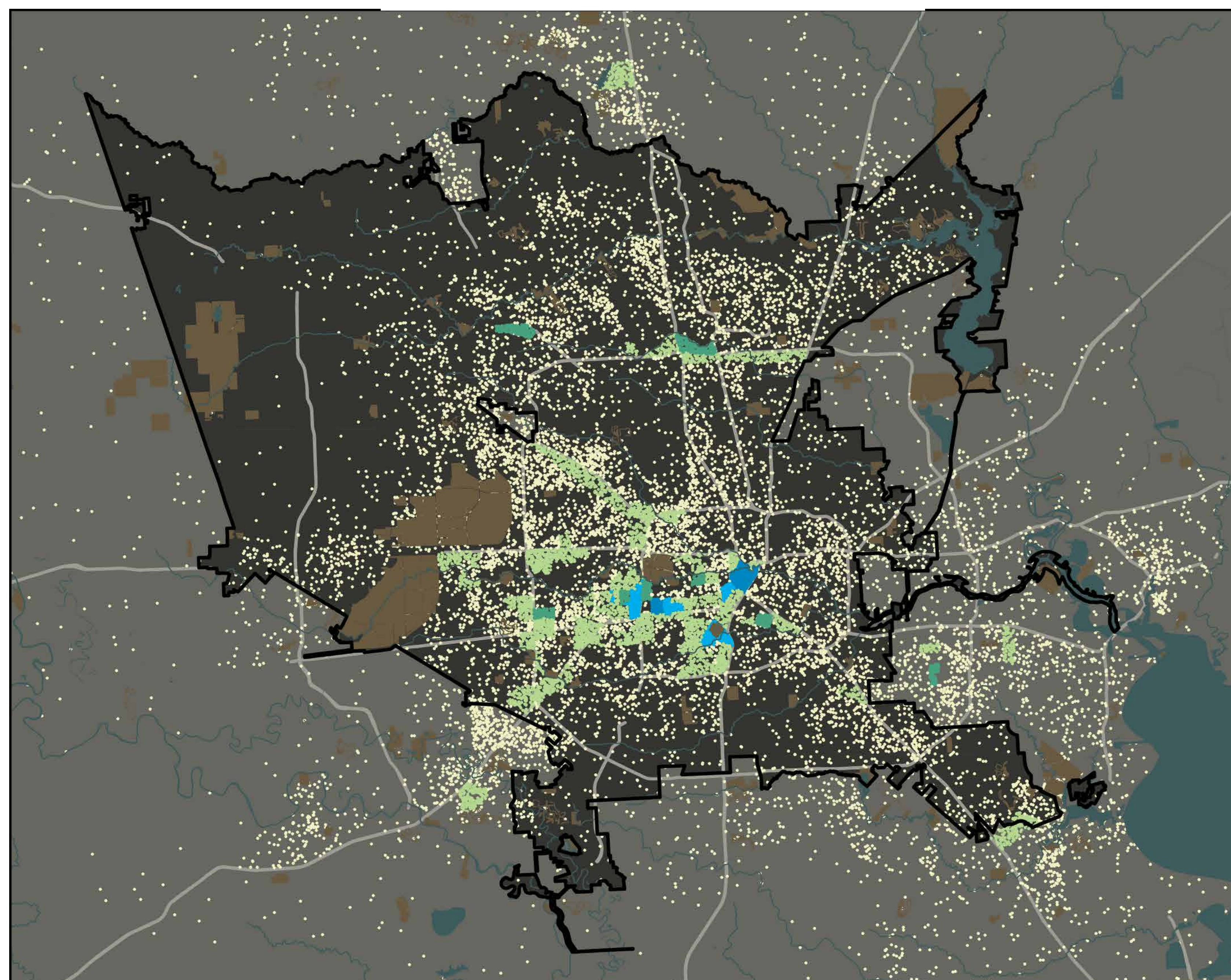




# Why METRONext

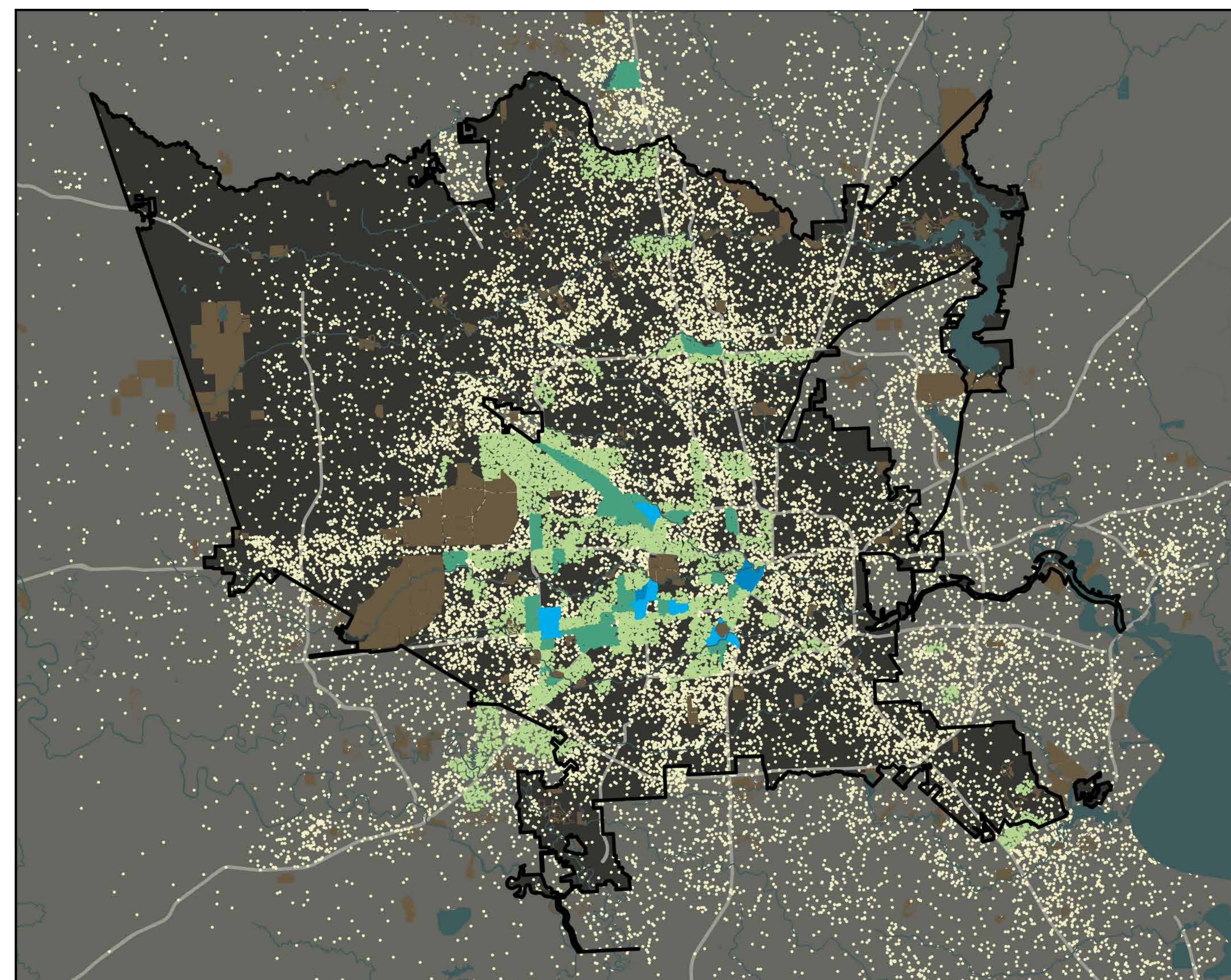
Job growth will create **more employment centers** and **more demand for transportation in the region**

HOUSTON  
2010



REGIONAL EMPLOYMENT  
**3 MILLION**

HOUSTON  
2040



REGIONAL EMPLOYMENT  
**4 MILLION**

**LEGEND**

1 DOT = 100 PEOPLE

■ ■ Intense growth areas

Source: Houston-Galveston Area Council



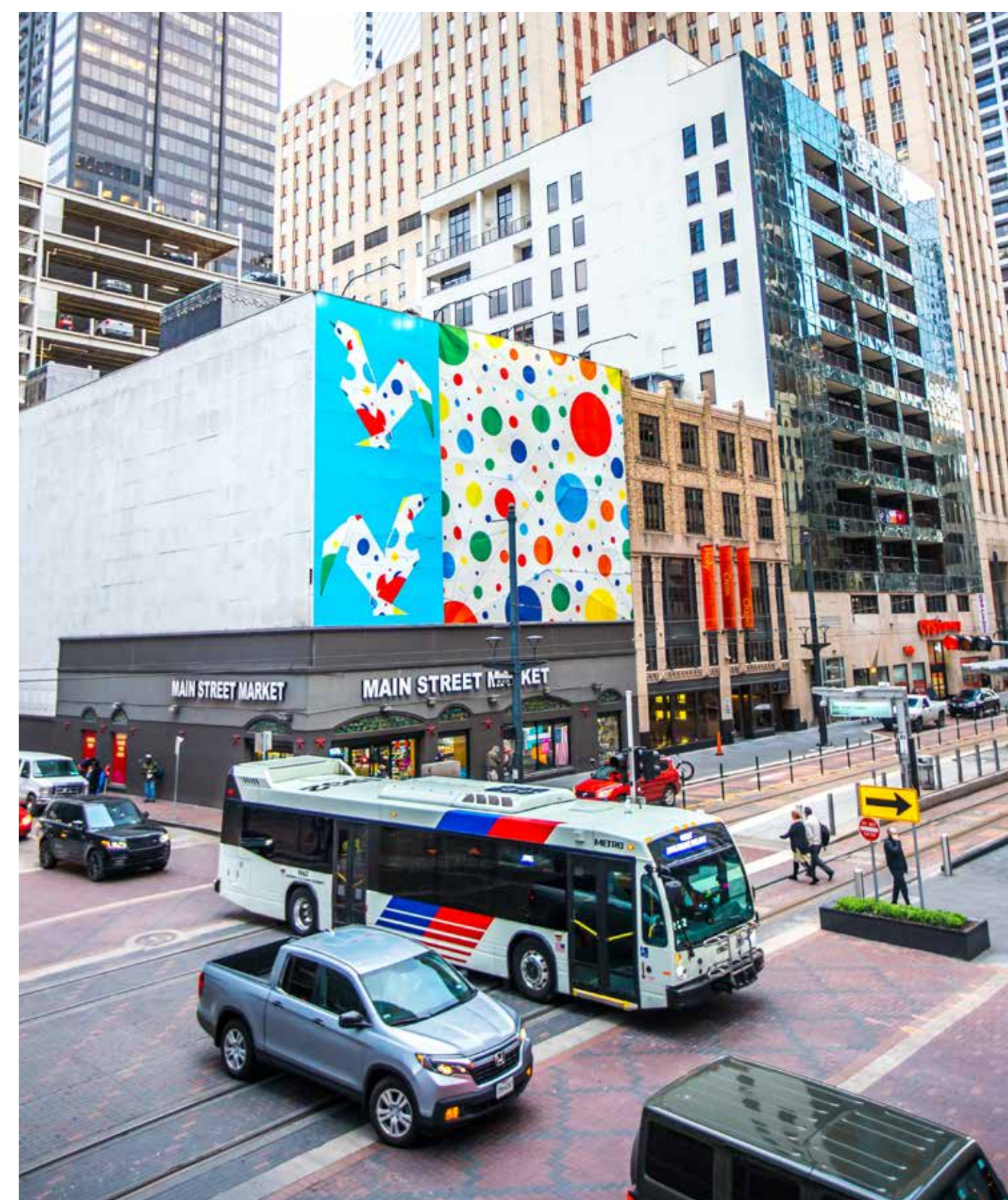


# Why METRONext

Growing the transit system improves our quality of life



- + Eases traffic congestion and provides travel choices that save time and money



- + Improves air quality and benefits the environment



- + Gives everyone the freedom to move throughout the region



- + Supports employment growth, business development, and prosperous communities





# You Spoke. We Listened.

Your comments helped us develop the METRONext Vision and Moving Forward Plans



## Connections

- + Create more transit connections to more travel destinations



## Speed & Reliability

- + Expand the network with frequent transit routes that attract high ridership



## Customer Experience

- + Deliver a safe, flexible, and high-quality transit experience



## Technology

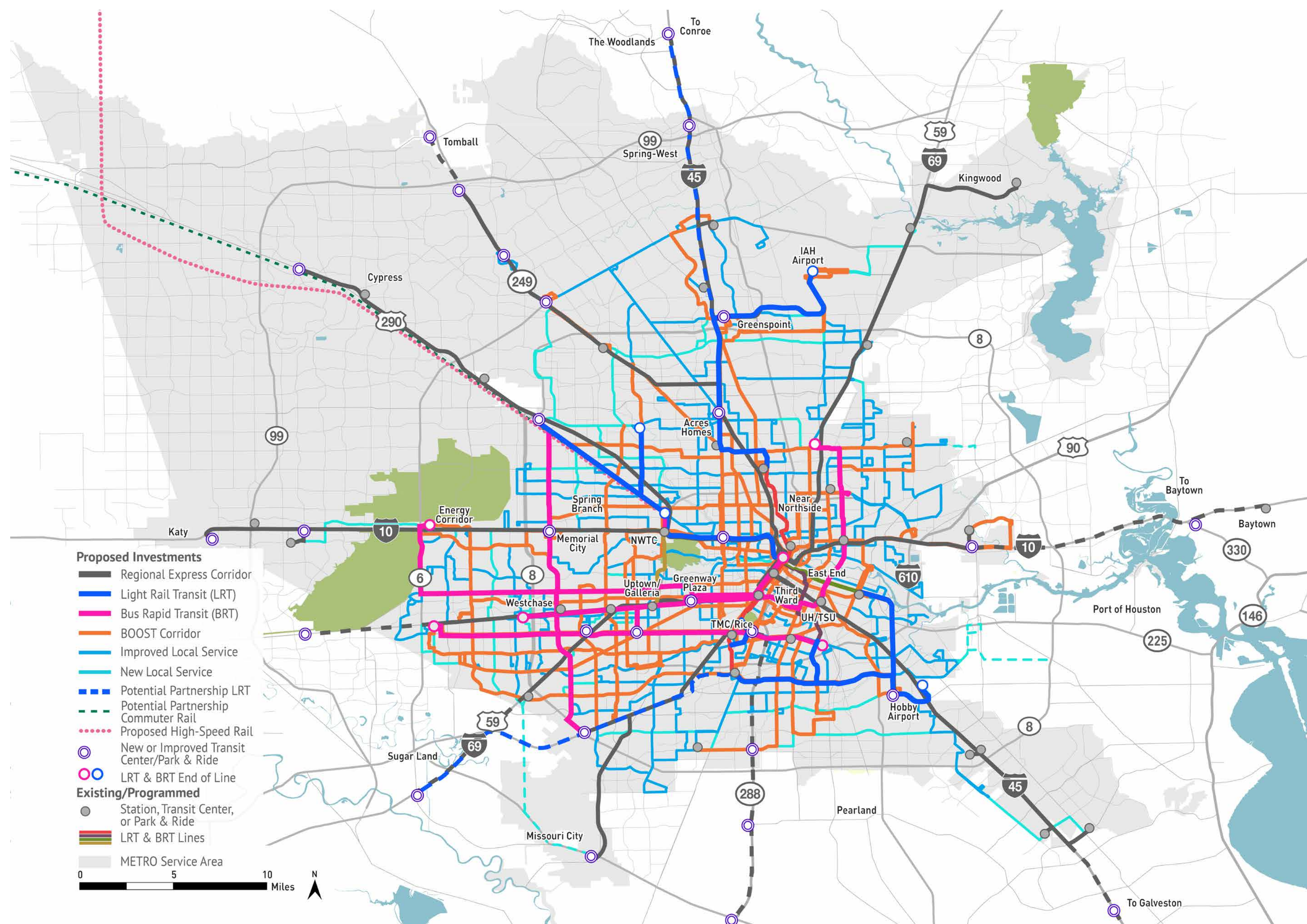
- + Utilize advanced technologies to meet passenger needs





# METRO*Next* Vision Plan

A bold, transformative blueprint developed by gathering public input at more than 200 community events and open houses

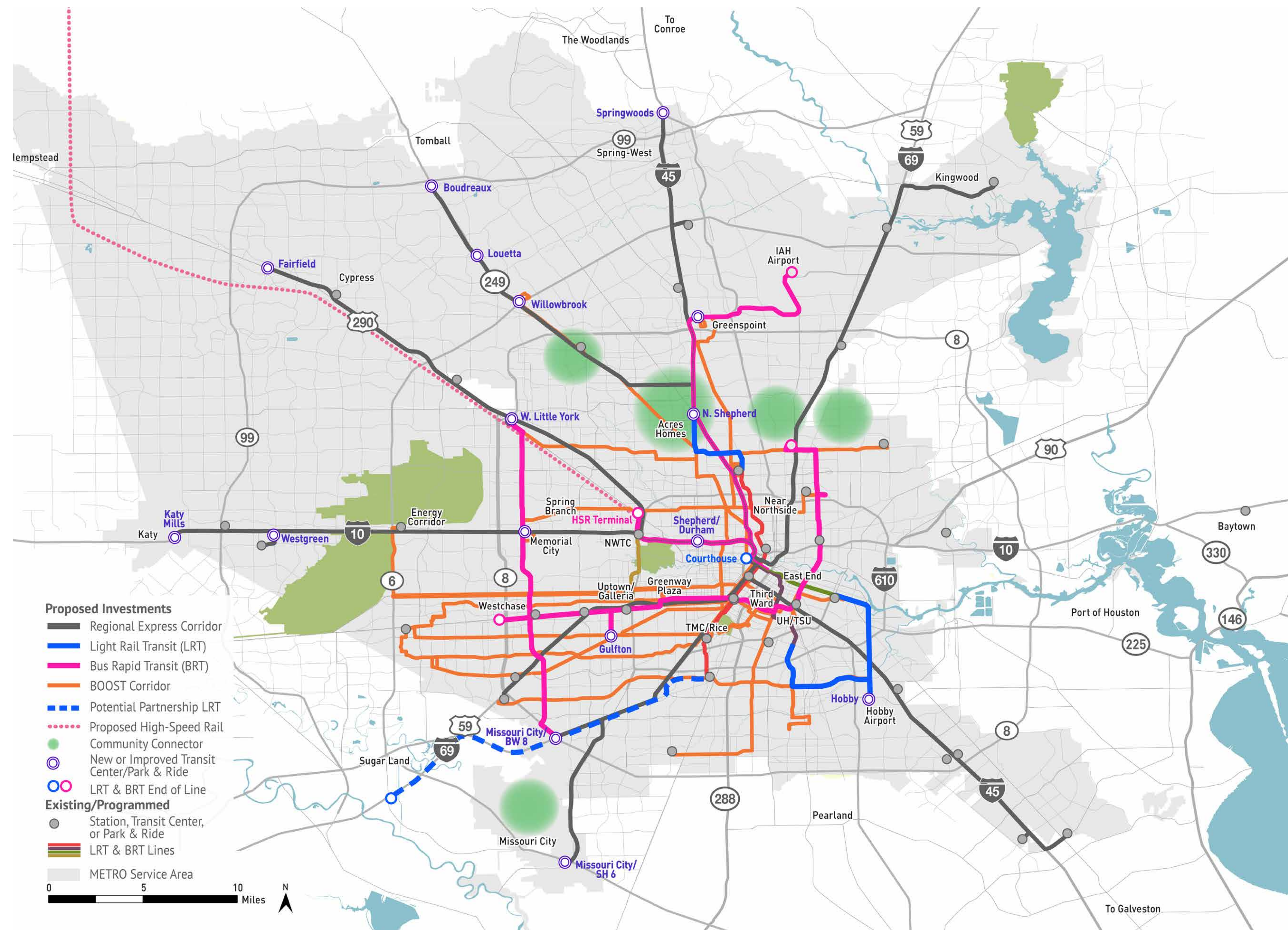






# METRO*Next* Moving Forward Plan



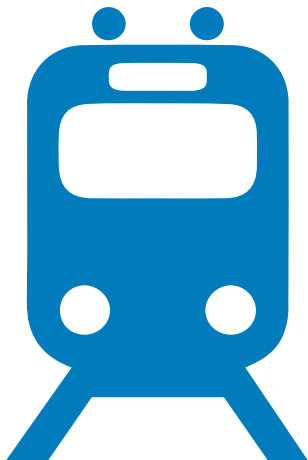

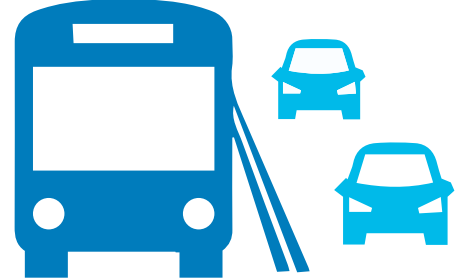
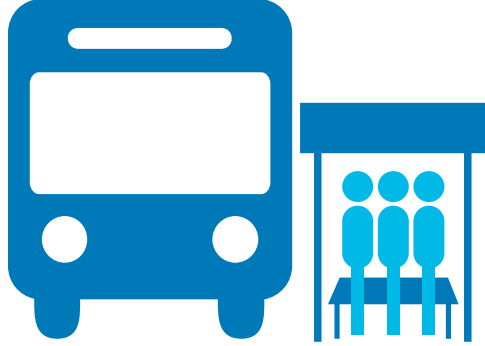

The first phase \$7.5 billion proposal includes more than 40 projects for 2040 and beyond



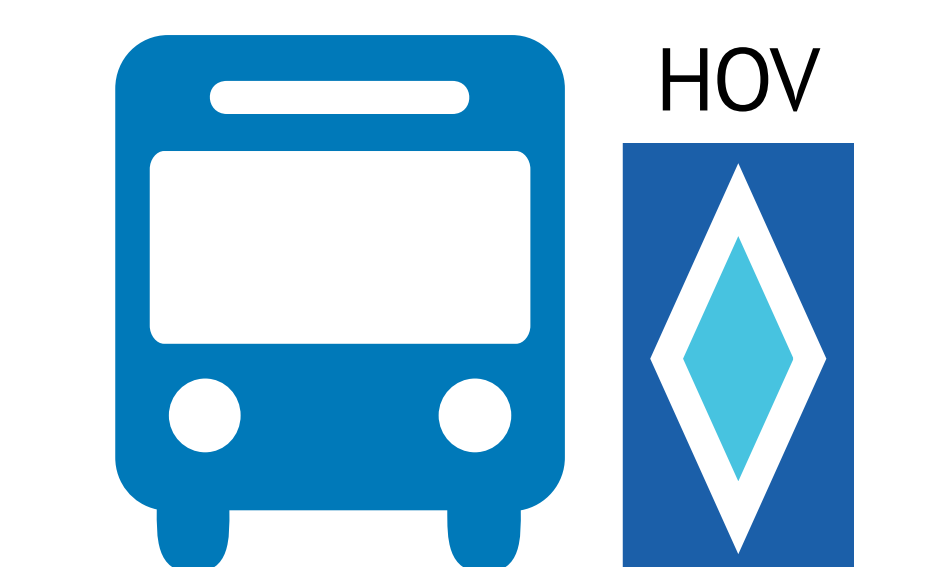


# METRO*Next* Moving Forward Plan Investments & Benefits

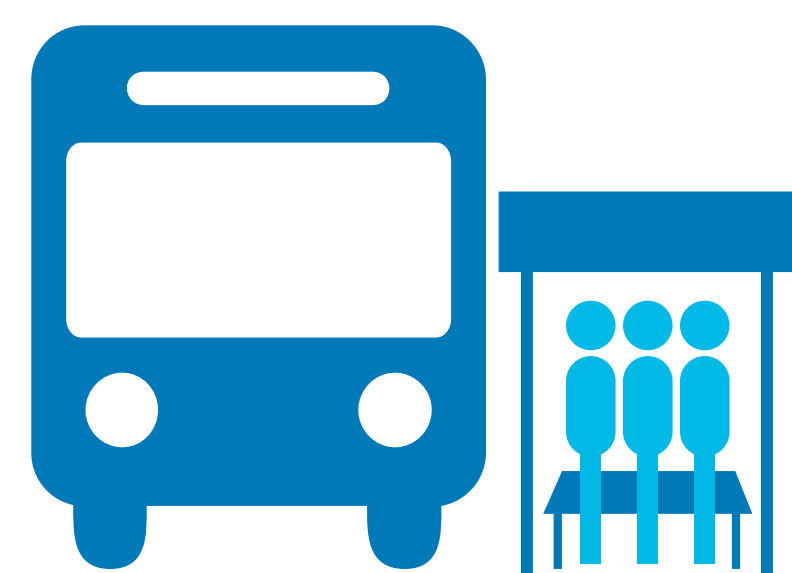
## MAJOR INVESTMENTS:

110 miles		Regional Express network	16		New or improved Park & Rides and transit centers
20 miles		Extended light rail lines	3		Community Connector curb-to-curb services
75 miles		New Bus Rapid Transit (BRT) system	25%		Increase in local bus service
260 miles		BOOST and Signature Bus lines - enhanced local service			

## SERVICE & ACCESS IMPROVEMENTS



Improved transit service on major freeways



Improved bus service and bus stops



Resiliency planning



Partnership projects



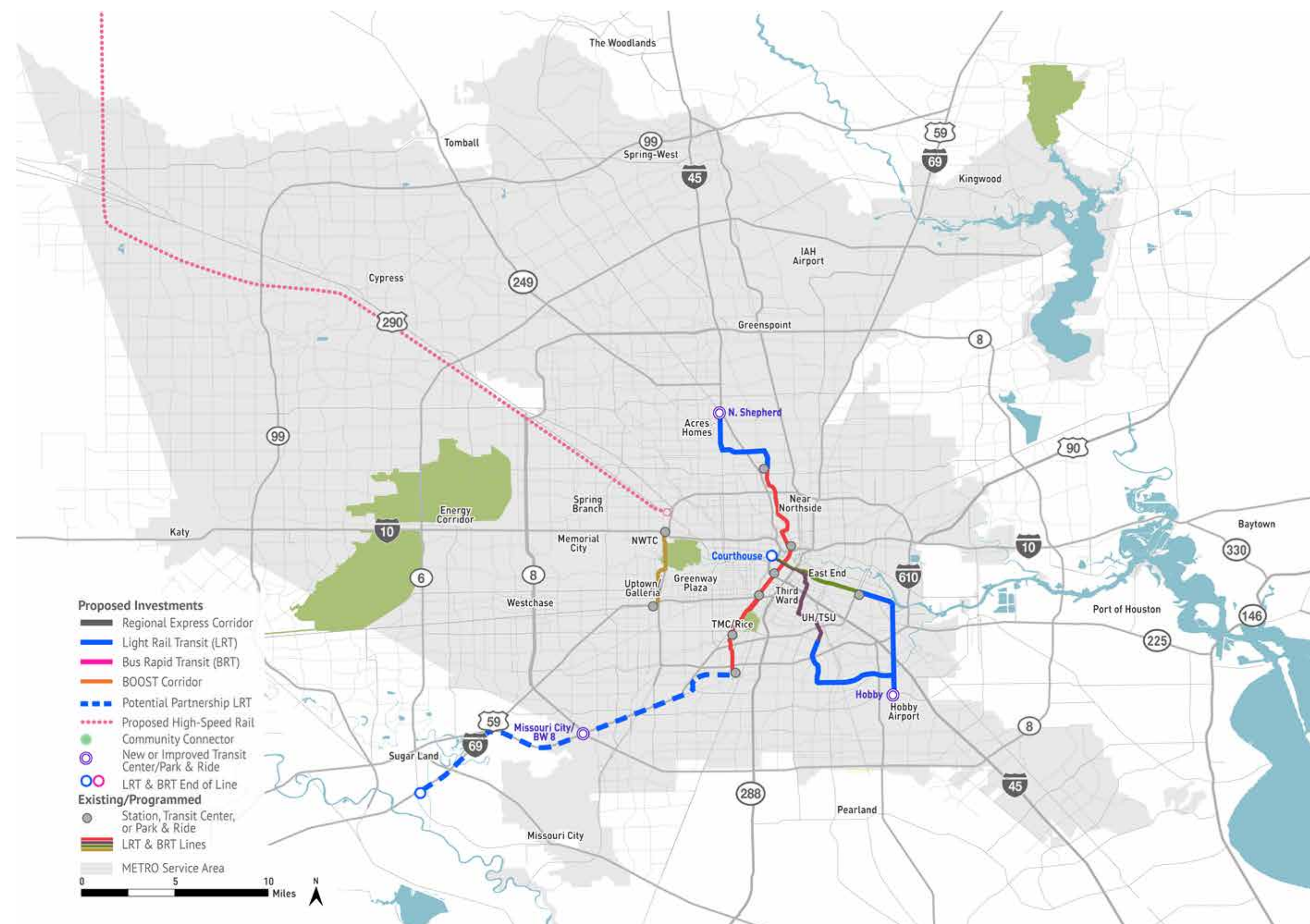
Universal Accessibility





# Moving Forward Plan

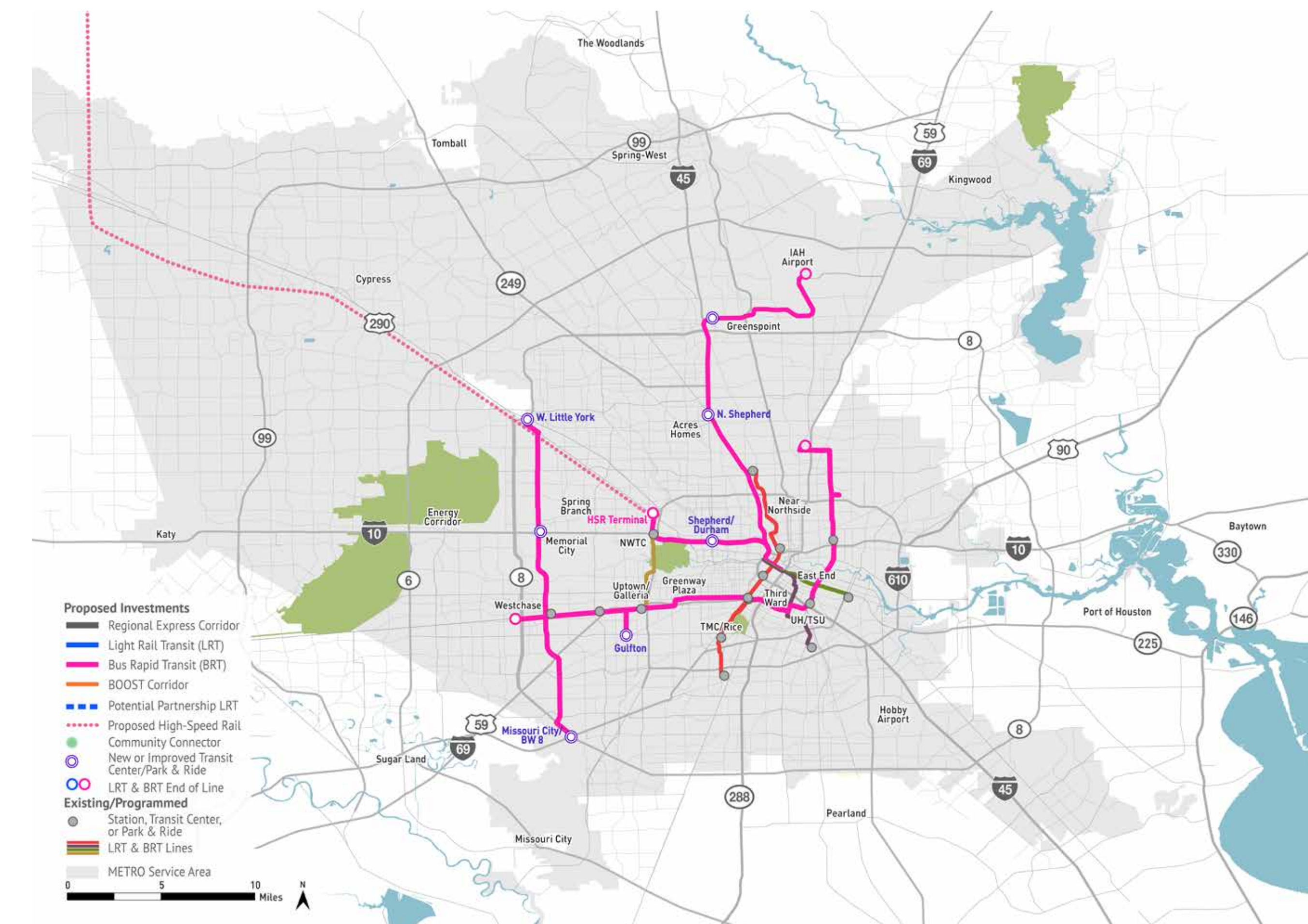
## METRORail EXTENSIONS



- + 20 additional miles of light rail
- + Green and Purple lines extended to Hobby Airport
- + Green and Purple lines extended to Houston Municipal Courthouse
- + Red Line extended to North Shepherd Park & Ride



## BUS RAPID TRANSIT SYSTEM (BRT)

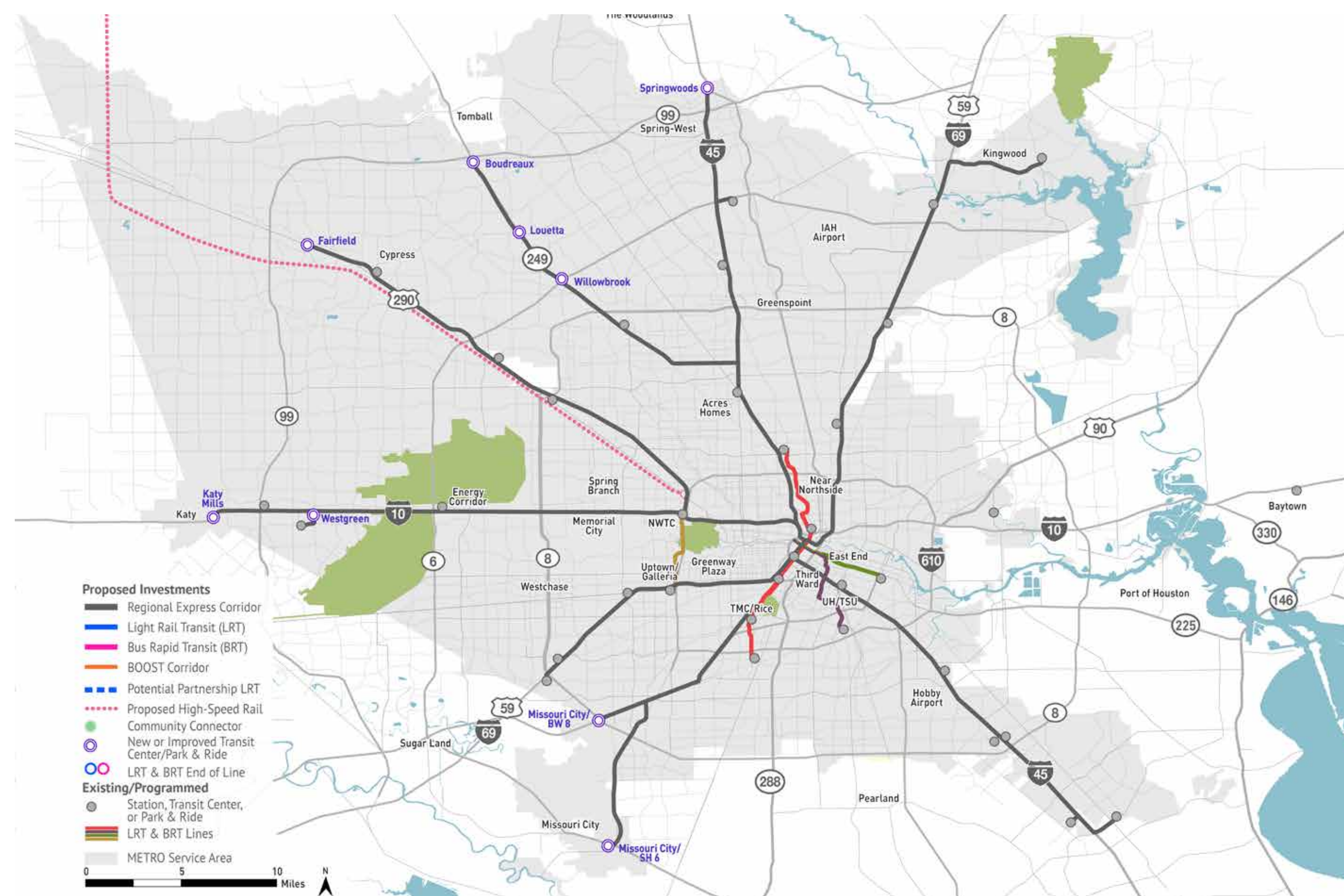


- + 75 miles of BRT
- + University Corridor from Westchase Park & Ride to Tidwell Transit Center connects the southwest and east sides
- + IH 10 inside the Loop to Northwest Transit Center linking Downtown, Uptown and the proposed High-Speed Rail Terminal
- + Downtown to Greenspoint and Bush IAH via IH 45
- + Uptown BRT extension to new Gulfton Transit Center
- + Gessner Corridor from West Little York Transit Center to Missouri City/BW8 Park & Ride



# Moving Forward Plan

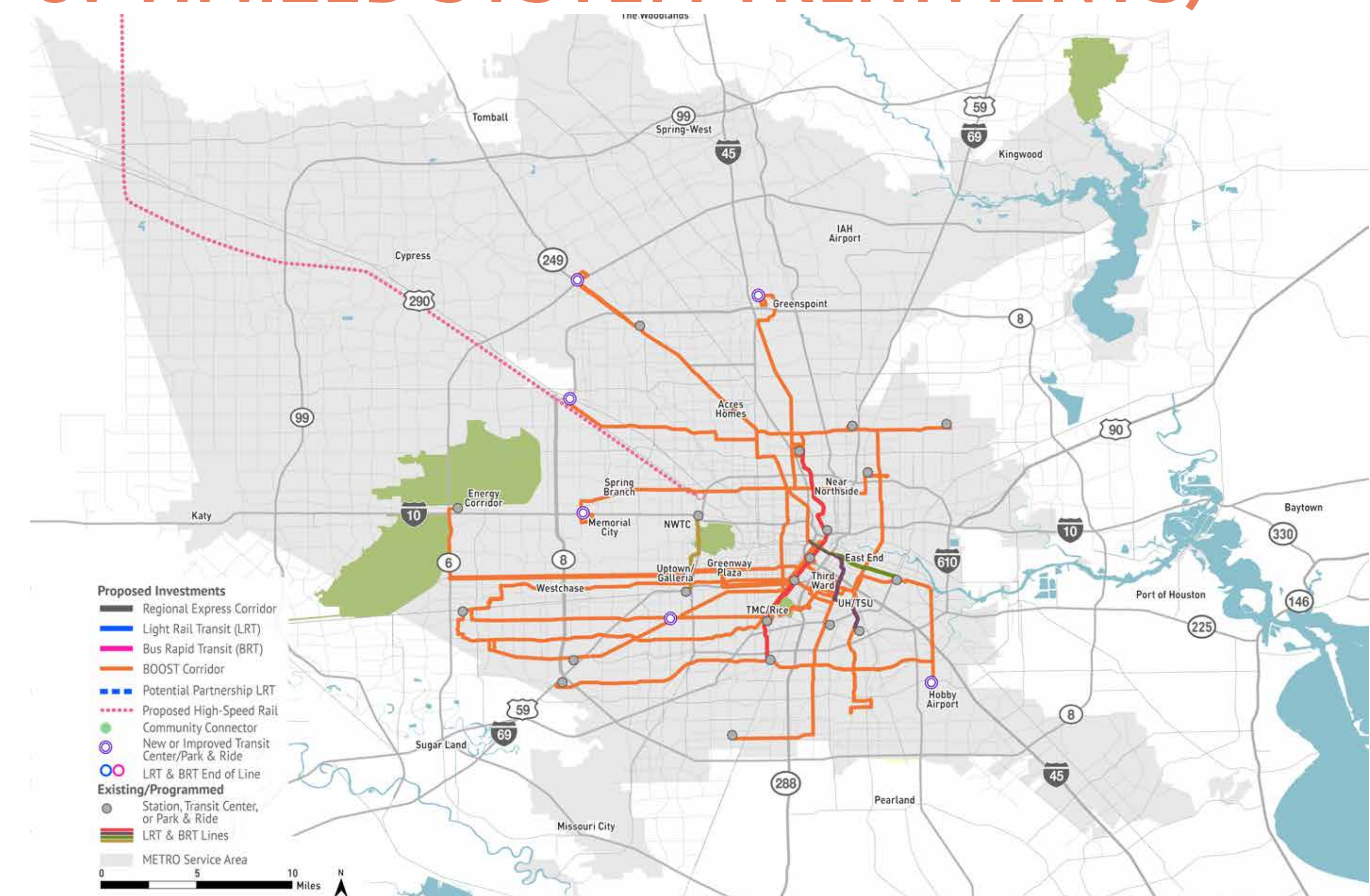
## REGIONAL EXPRESS



- + 110 miles of Regional Express Service
- + Fast regional trips between employment centers and major destinations
- + Service seven days a week including expanded midday service
- + Utilizes expanded two-way High Occupancy Vehicle/High Occupancy Toll (HOV/HOT) lanes
- + Expands commuter service to new destinations



## BOOST NETWORK (BUS OPERATIONS OPTIMIZED SYSTEM TREATMENTS)



- + 260 miles of BOOST service, enhancing local services
- + Serves dense, high-ridership routes, and key destinations
- + Bus stop relocation, new shelters, and accessibility upgrades
- + Traffic signal priority, improved speed, and enhanced passenger information







# Moving Forward Plan

Further improvements enhance the customer experience

## Creating Better Access



- + Universal Accessibility
- + Bus stop, sidewalk, and bikeway improvements
- + Make it easier to connect to transit

## Improving Local Service



- + Expanded Frequent Network (service every 15 minutes or better)
- + More service - including early morning and late night
- + New routes connecting more people to the METRO network

## Integrating Community Connector Service



- + On demand, curb-to-curb service
- + Links to larger METRO network
- + Smaller vehicles for flexible service where needed



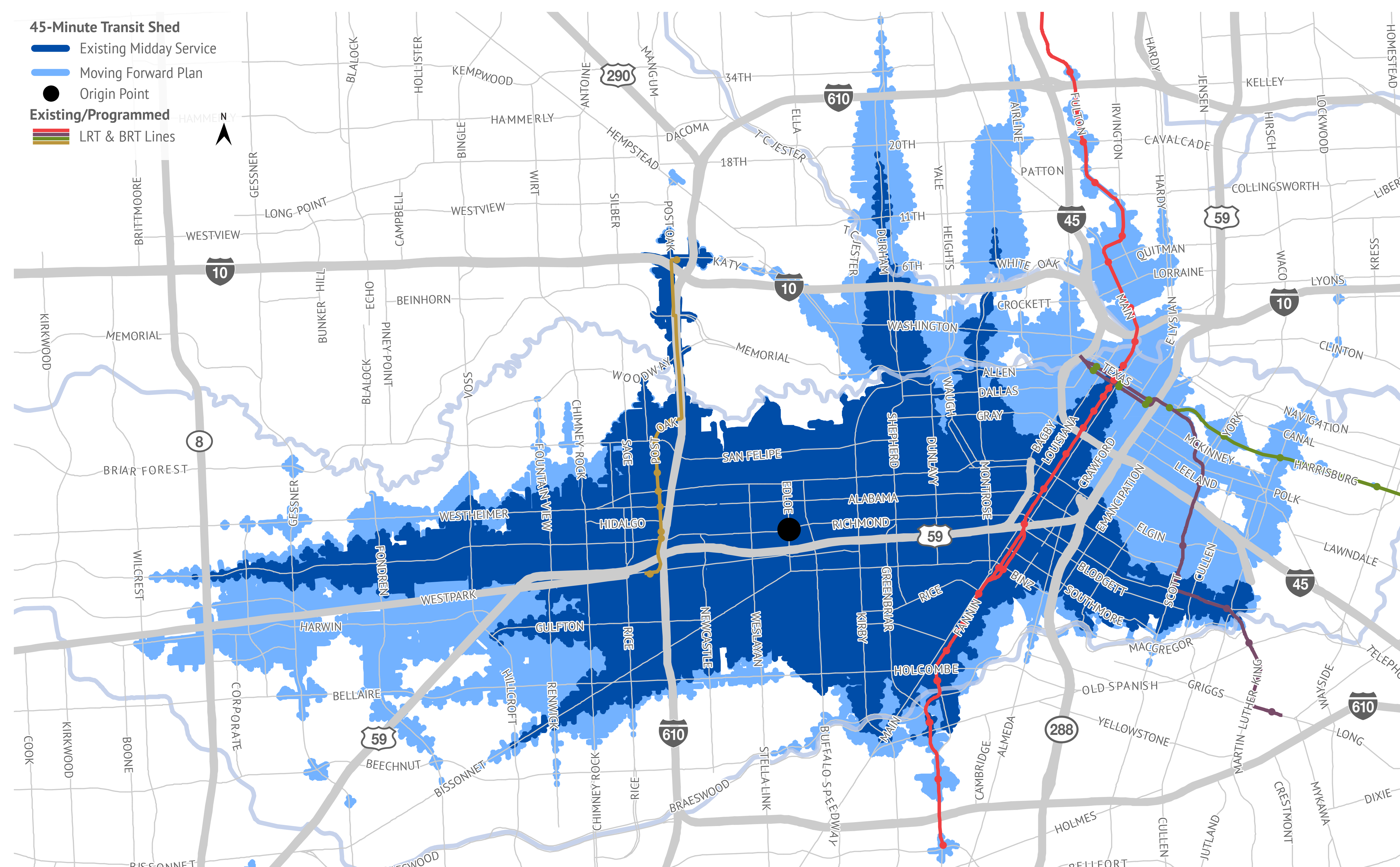


# More Connections

## Access to Opportunity

### Greenway Plaza Access

Midday – within 45 minutes



### MOVING FORWARD PLAN PROVIDES

+ 82% more people  
and 66% more jobs  
with convenient all  
day access to/from  
Greenway Plaza





# Benefits: Accessibility and Comfort

## A Great Way to Travel

### 2040 RESULTS



- + 103% increase in ridership, more than doubling ridership from the current year



+ Universal Accessibility



+ New safety technology investments and police enforcement



+ First and Last Mile connections



+ Better and more bus stops



+ Promotes community and economic development



+ New buses, new technology, and more service



# Benefits: Innovative Solutions

## New ways to use cutting-edge technology



**METRO HAS PARTNERED WITH  
TEXAS SOUTHERN UNIVERSITY  
TO DEMONSTRATE AN  
AUTONOMOUS VEHICLE**

- + Integrate new technology, Automated Vehicles, and shared mobility
- + Exclusive guideways ready for Automated Vehicle technology
- + Make riding easier (passenger information and payment systems)
- + Support transit-oriented development to give more people options to live near high quality transit service





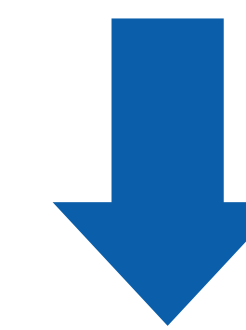


# No New Tax Increase



- + No increase in sales or property tax to fund the plan
- + No new fees
- + The METRONext Moving Forward Plan is financially sound

## General Mobility Program Continues



**METRO will continue to rebate 25 percent of its one-cent sales tax revenue back to the City of Houston, Harris County, and the multi-cities for mobility-related projects.**





# What's Next

## Help Us Finalize a Plan that Works for You

Your input is crucial. Learn about other ways to participate at  
**[www.metronext.org](http://www.metronext.org)**

**Please fill out a comment card and tell us what you think.**



 **Twitter: @METROHouston**

 **Facebook: @RideMETRO**